



**INDLU YOWISOMTHETHO  
YEPHONDO LEMPUMAKOLONI (ECPL)**

**INCWADI YE-PAIA**

# Ilungiswe ngokuthobela icandelo le-14 lomThetho Nomb 2 wokuPhakanyiswa kokuFikelela kwiiNkcukacha wama-2000 (njengoko uhlehlengisiwe)

## ISIQULATHO

1. ULUHLU LWEZISHUNQULO NEZIFINYEZO .....	4
2. IINJONGO ZENCWADANA YE-PAIA .....	5
3. UKUSEKWA KWENDLU YOWISOMTHETHO .....	6 - 8
4. UBUME BENDLU YOWISOMTHETHO NEMISEBENZI YAYO.....	<b>Error! Bookmark not defined.</b>
5. IINKCUKACHA ZOQHAGAMSHELWANO ZENDLU YOWISOMTHETHO.....	11-12
6. INDLELA YOKWENZA ISICELO SOKUFIKELELA KWIINKCUKACHA .....	13-16
7. IZISOMBULULO ZEXESHANA EZIKHOYO .....	18-19

8. ISIKHOKELO SOLAWULO LWEENKCUKACHA.....	19-21
9. IMIBA ETHI INDLU YOWISOMTHETHO IGCINE IINGXELO NGAYO.....	22-24
10. IIREKHODI ZENDLU YOWISOMTHETHO EZIFUMANEKAYO NGAPHANDLE KOKUBA UMNTU AFAKE ISICELO SOKUFIKELELA KUZO.....	25-28
11. IINKONZO EZIFUMANEKAYO KULUNTU NENDLELA ULUNTU OLUNGAFIKELELA NGAYO KWEZO NKONZO	28-29
12. UKUBANDAKANYWA KOLUNTU EKWENZIWENI KOMGAQONKQUBO OKANYE UKUSETYENZISWA KWAMANDLA OKANYE UKWENZIWA KOMSEBENZI YI-ECPL. ...	29
13. ULUNGISELELO KWIINKCUKACHA NGOMNTU .....	29-34
14. UKUFUMANEKA KWENCWADANA .....	35
15. UKUHLAZIYWA KWENCWADANA.....	36

## 1. ULUHLU LWEZISHUNQULO KUNYE NEZIFINYEZO

- 1.1 "Intlawulo **yokufikelela** " ithetha intlawulo emiselweyo ngokweenjongo zecandelo lama-22 (6) okanye 54 (6), njengoko kunokuba njalo.
- 1.2 **"DIO"** Isekela Gosa leeNkcukacha;
- 1.3 **"IO"** IGosa leeNkcukacha;
- 1.4 **"ECPL"** INdlu yoWisomthetho yePhondo leMpumakoloni
- 1.5 **"UMphathiswa"** UMphathiswa wezoBulungisa kunye neeNkonzo zoLuleko;
- 1.6 **"PAIA"** UmThetho wokuPhakanyiswa koFikelelo kwiiNkcukacha onguNomb. 2 wama-2000 (njengoko uhlehlengisiwe);
- 1.6 **"FMPPLA"** UmThetho woLawulo lweMali yePalamente neziNdlu zoWisomthetho zamaPhondo onguNomb 10 wama-2009 njengoko ihlehlengisiwe;
- 1.7. **"POPIA"** UmThetho woKhuseleko lweNkcukacha zoMntu onguNomb. 4 wama-2013;
- 1.8. **"Umlawuli"** UmLawuli weeNkcukacha.
- 1.9. **"UMfakisicelo "** Nawuphi na umntu owenza isicelo sokufikelela kwirekhodi yelo qumrhu likarhulumente okanye umntu ome egameni lomntu owenza isicelo sokufikelela kwirekhodi.

## 2. INJONGO YENCWADANA YE-PAIA

Le ncwadana ye-PAIA iluncedo kuluntu ukuze-

- 2.1 Iujonge ubume beerekhodi esele zikho kwiNdlu yoWisomthetho yePhondo leMpumakoloni), ngaphandle kokuba kufuneke bangenise isicelo esisemthethweni se-PAIA;
- 2.2 luqonde indlela yokufaka isicelo sokufikelela kwiirekhodi zeNdlu yoWisomthetho yePhondo leMpumakoloni lufikelela kuzo zonke iinkcukacha zoqhagamshelwano ezifanelekileyo zabantu abaza kunceda uluntu ngeerekhodi abajonge ukufikelela kuzo;
- 2.3 lufikele kuzo zonke iinkcukacha ezifanelekileyo zabantu abanokuncedisa uluntu ekubeni lufikelele kwiirekhodi olujolise ukufikelela kuzo;
- 2.4 zazi zonke izisombululo zexeshana ezifumanekayo kwiNdlu yoWisomthetho yePhondo leMpumakoloni malunga nesicelo sokufikelela kwiirekhodi, phambi kokuba uye kuMlawuli okanye kwiiNkundla; zazi iinkcazelo zeenkonzelo ezifikelelekayo kuluntu ezivela eECPL kunye ufikelela njani kwezo nkonzo;
- 2.5 ubeneenkcazelo zesikhokelo ngendlela yokusebenzisa i-PAIA, njengoko ihlaziyiwe nguMlawuli kunye nendlela yokufumana ufikelelo kwezo nkonzo;
- 2.6 ukwazi ukuba ingaba iNdlu yoWisomthetho yePhondo leMpumakoloni izilungiselela njani iinkcukacha ngomntu, injongo yolungiselelo lweencukacha ngomntu kunye nenkcazo yamacandelo ezihloko zedatha okanye nnamacandelo eenkcukacha okanye amacandelo eenkcukacha anxulumene noko;
- 2.7 bazi ukuba ingaba iNdlu yoWisomthetho yePhondo leMpumakoloni icwangcise ukugqithisela okanye ukulungiselela iinkcukacha ngomntu ngaphandle kweRiphabhlikhi yomZantsi Afrika kunye nabamkeli okanye amacandelo abamkeli ekunokuthi kunikezelwe kubo iinkcukacha ngomntu; kwaye
- 2.8 bazi ukuba ingaba iNdlu yoWisomthetho yePhondo leMpumakoloni inamanyathelo afanelekileyo okhuseleko okuqinisekisa ubumfihlo, imfezeko kunye nokufumaneka kweenkcukacha ngomntu ezilungiselelwayo.

### **3. UKUSEKWA KWENDLU YOWISOMTHETHO YEPHONDO LEMPUMAKOLONI**

- 3.1. INdlu yoWisomthetho yePhondo leMpumakoloni isekwe ngokomGaqosiseko weRiphabhliki yomZantsi Afrika, we-1996. ICandelo le-104 lomGaqosiseko linika amagunya owisomthetho lephondo kwiNdlu yoWisomthetho yalo, kwaye linika indlu yowisomthetho yephondo igunya lokupasisa umgaqosiseko. kwiphondo lalo okanye ihlengahlengise nawuphi na umGaqosiseko opasiswe lilo ngokwecandelo le-142 nele-143, liwise umthetho ngawo nawuphi na umbandela okwindawo yemisebenzi edweliswe kwiShedyuli yesi-4, nawo nawuphi na umbandela odweliswe kwiShedyuli yesi-5, nawo nawuphi na umba ongaphandle kwaloo mimandla yemisebenzi, kwabelwe iphondo elo ngumthetho wesizwe nawo nawuphi na umba othi ummiselo womGaqosiseko ujonge ukuwiswa komthetho wephondo ukunikezela nawaphi na amagunya awo owisomthetho kwibhunga likamasipala.
- 3.2. Indlu yowisomthetho ekusebenziseni igunya layo lowisomthetho inokuqwalasela, ipasise, ihlengahlengise okanye ikhabe nawuphi na umThetho oYilwayo ephambi kweNdlu yoWisomthetho kwaye inokuqalisa okanye ilungise umthetho ngaphandle kwemiThetho eYilwayo yemali.
- 3.3. INdlu yoWisomthetho kufuneka ibonelele ngeendlela zokuqinisekisa ukuba onke amaziko alawulayo karhulumente kwiPhondo anoxanduva kuyo nokugcina ngokusoloko ibeke iliso ekusebenzeni kwegunya lesigqeba sephondo ephondweni kuquka nokumiliselwa kwemithetho.
- 3.4. INdlu yoWisomthetho iphinda ifuneke ngokwecandelo le-118 lomGaqosiseko ukuba iququzelele ukubandakanyeka koluntu kuwisomthetho nezinye iinkqubo zendlu yowisomthetho neekomiti zayo kwaye iqhube imicimbi yayo ngendlela evulelekileyo ize ibambe iindibano zayo kunye nezo zeekomiti zayo esidlangalaleni kodwa

amanyathelo afanelekileyo athatyathwe ukuze kulawuleke ukufikelela koluntu, kuquka ukufikelela kwabeendaba kwindlu yowisomthetho nakwiikomiti zayo.

- 3.5. Inkqubo yowisomthetho yesizwe ifuna ukuba indlu yowisomthetho ingenise izimvo nezilungiso ngokumalunga nemithetho esayilwayo yecandelo lama-74, 76 nelama-77 njengoko kucacisiwe kumGaqosiseko. Le yimithetho echaphazela amaphondo, kwaye iBhunga leSizwe lamaPhondo (NCOP) lifuna ukuba iNdlu yoWisomthetho yePhondo ibhengeze izimvo zoluntu kwaye ibonise ukuvunywa kwayo okanye ukukhaba le mithetho iyilwayo ekhankanyiweyo.

### ***UMBONO***

INdibano yaBantu enobutshantliziyo nesabelayo ngenjongo yorhulumento olusulungekileyo kunye nokuphuculwa komgangatho wobomi babantu bonke.

### ***INTETHO ENGEENJONGO NGOMBONO***

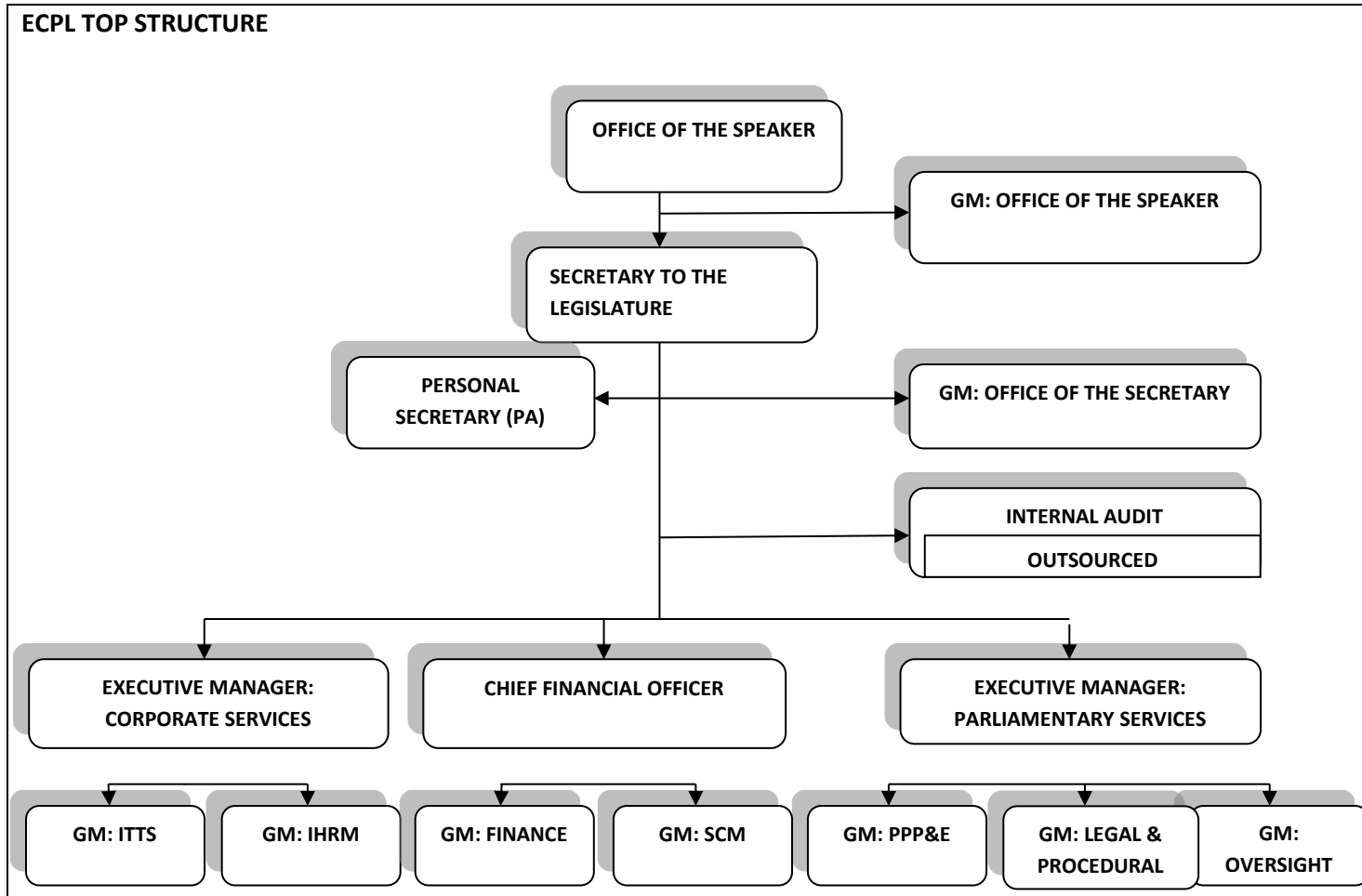
- Ukubeka iliso oluya kuqinisekisa ukuthathwa koxanduxa nokusabela kukarhulumente kubantu bePhondo ;
- Ukusungula, ukupasisa nokubeka iliso kumilisele lwemithetho ephakamisa amalungelo abemi;
- Ukuqinisekisa ukubandakanywa koluntu okunemiphumela, ukufundiswa nokuphenjelelwa;
- Ukuqinisekisa ukuba amaqela abuthathaka ayabandakanywa kuzo zonke iinkqubo zeNdlu yoWisomthetho, kunye
- Nokukhuthaza ubudlelwane namaziko asekuhlaleni nawehlabathi axhasa idemokhrasi.

### **IZINTO EZIXABISEKILEYO**

Ukugqwesa	Ukuphumeza uxanduva lwethu ngenkathalo enkulu kwaye sinikezela ngeyona migangatho iphezulu yenkonzo kwabo sibasebenzelayo.
Inggqibelelo	Ukulandela izenzo ezisesikweni ngokuvuleleka, ukunyaniseka, ukungafihli nto kunye nokungaguquguquki kwizenzo zethu.
Ukuzibophelela	Ukugxila ekubeni sifikelele kwiinjongo zethu ngaphandle kokuvumela okanye kwesithintelo.
Ubungcali	Ukuqhuba imicimbi yethu nabo sisebenzisana nabo ngenkuthalo ephezulu, ubuchule kunye nokubonisa ukuba noxanduva.
Ukuphendula	Ukwamkela uxanduva olupheleleyo ngezenzo zethu okanye ukungenzi kunye neziphumo zoko.
Ukunyaniseka	Ukuxhasa imithethosiseko kunye neendlela zokuziphatha njengoko zichaziwe kumGaqosiseko weRiphabliki yoMzantsi Afrika.
Ukusabela	Iziko eliphendulayo kwabo bachaphazelekayo ngexesha elifanelekileyo.
Intlonipho	Ukuthathela ingqalelo amalungelo abemi.
Ukubaselubala	Ukuqinisekisa ukuba yiNdibano yaBantu efikelekayo kwaye ebonelela ngeencukacha kuluntu.
Ukubaphandle	Ukunika intsingiselo kwindlela iNdlu yoWisomthetho ekwazi ngayo ukwakha amanqanaba aphezulu okuphendula nokuthembana phakathi kwabemi.

4. UBUME BENDLU YOWISOMTHETHO YEPHONDO LEMPUMA KOLONI NEMISEBENZI YAYO.

4.1. Ubume



## 4.2 Imisebenzi

*INdlu yoWisomthetho yePhondo leMpumakoloni inale misebenzi ilandelayo:*

- (a) Ukubeka iliso kwiSigqeba*
- (b) Uqingqo-wiso mthetho*
- (c) Intathonxaxheba yoluntu*

**5. IINKCUKACHA ZOQHAGAMSHELWANO ZEGOSA LEENKCUKACHA KUNYE NESEKELA LEGOSA  
LEENGCACISO LENDLU YOWISOMTHETHO**

IGosa leNkcukacha kwiNdlu yoWisomthetho yePhondo leMpumakoloni **nguNksk Nomawethu Ngcakani**,  
uNobhala weNdlu yoWisomthetho. Iinkcukacha zoqhagamshelwano zeGosa leeNkcukacha zezi zilandelayo:

Idilesi yeposi:

INdlu yoWisomthetho yePhondo leMpumakoloni

Private Bag X 0051

Bhisho

5605

Idilesi yendawo:

I-Ofisi kaNobhala

KwiSakhiwo i-Charlotte Maxeke

Independence Avenue

Bhisho

5605

Inombolo yomnxeba.:

I-Ofisi kaNobhala: (+27) 40 6080207

I-imeyile: [nngcakani@ecleg.gov.za](mailto:nngcakani@ecleg.gov.za)

ISekela Gosa leeNkcukacha

ISekela Gosa leeNkcukacha **ngu Adv Koleka Beja**. Iinkcukacha zoqhagamshelwano zeSekela leGosa leeNkcukacha zezi zilandelayo:

Idilesi yeposi:

INdlu yoWisomthetho yePhondo leMpumakoloni

Private Bag X 0051

Bhisho

5605

Idilesi yendawo:

1st Floor

Eddie Trent Building

Independence Avenue

Bhisho

5605

Inombolo yomnxeba: 27 040 609154

Inombolo yemfonofono: 082 5537950

I-imeyile: [kbeja@ecleg.gov.za](mailto:kbeja@ecleg.gov.za)

5.1. Abafakizicelo zeenkucukachai kufuneka bathumele zonke izicelo zokufikelela kwiinkcukacha ku-**Adv Koleka Beja**,

ophathiswe uxanduva lweSekela leGosa leeNkcukacha kunye nokuhoya zonke izicelo zokufikelela kwiinkcukacha.

5.2. Izicelo zokufikelela kwiinkcukacha mazisiwe ngesandla okanye zithunyelwe nge-imeyile kwiSekela leGosa leeNkcukacha le-ECPL.

5.3 Abafakizicelo bayakhuthazwa ukuba bathumele izicelo zeenkukacha nge-imeyile apho kunokwenzeka oko.

Apho iinkonzo zeposi zisetyenziswayo, umfakisicelo makasebenzise i-imeyile ebhalisiweyo.

Kubalulekile ukuba ubungqina beposi bugcinwe kwaye bunikezelwe xa uceliwe.

5.4 Xa izicelo zofikelelo kwiinkcukachai zisiwa ngesandla, umfakisicelo makaqinisekise ukuba ugcina ikopi yefomu ekufuneka isayinwe kwaye igximfizwe njengobungqina bokuziswa kwayo. Nceda uqinisekise ukuba isicelo sigximfizwe kwaye sisayinwe njengobungqina bokuhanjiswa.

## **6 INDLELA YOKIFAKA ISICELO SOKUFIKELELA KWINKCUKACHA**

### **Inkqubo**

6.1 Umfakisicelo kufuneka agcwalise iFomu engunombolo 2 eqhotyoshelweyo njengeSihlomelo A aze ayingenise, izaliswe ngokufanelekileyo, kwiSekela leGosa leeNkcukacha elichaphazelekayo kwidilesi echazwe kumhlathi wesi-5 apha ngasentla ukwenzela ukuba umceli akwazi ukuphendula.

6.2 ISekela leGosa leeNkcukacha malincedise umfakisicelo ukuba umceli ufuna uncedo ngenkqubo okanye ngokuzaliswa kweefomu, kuquka abaceli abangafundanga okanye abanokhubazeko.

6.3 Ifomu engeniswe kwiSekela leGosa leeNkcukacha kufuneka iqulathe zonke iinkcukacha ezifanelekileyo ukwenzela

ukuba iSekela leGosa leeNkcukacha likwazi ukuchonga iinkcukacha oezithe ngqo eziceliweyo.

- 6.4 Umfakisicelo kufuneka kwakhona abonise ukuba ingaba ufuna ukufumana ikopi yerekhodi, ukufunda irekhodi kwi-ofisi ye-ECPL okanye, kungenjalo, ukukhusela irekhodi ngolunye uhlobo olukhoyo.
- 6.5 Isicelo akufuneki sibe seserekhodi eziphantsi kwezizathu zokwaliwa njengoko kubonelelwe phantsi kweSahluko sesi-4 se-PAIA.
- 6.6 Ukuba, ngenxa yezizathu ezibambekayo, ufikelelo alunakunikwa ngendlela efunwayo kodwa lube ngolunye uhlobo, umrhumo kufuneka ubalwe ngokwendlela ebekucelwe ngayo kuqala.
- 6.7 Umfakisicelo kufuneka abonise indlela anqwenela ukwaziswa ngayo ngesigqibo sikaSekela leGosa leeNkcukacha malunga nesicelo seenkcukacha ngendlela ethile (okt, iposi, ifeksi, i-imeyile) kwaye kufuneka ke ngoko anike iinkcukacha eziyimfuneko ukuze aziswe ngolo hlobo. Nceda ubone amanqaku abalulekileyo ngokumalunga nokusetyenziswa konxibelelwano ngeposi kumhlathi wesi-5 apha ngasentla njengoko kubalulekile ukufumana kunye nokuqwalaselwa kwezicelo.
- 6.8 Ukuba umfakisicelo ucela iinkcukacha egameni lomnye umntu, amandla kunye nobungqina begunya esenziwa phantsi kwalo isicelo, kufuneka oku kubonakaliswe ngendlela eyanelisa iSekela leGosa leeNkcukacha, kwaye loo myalelo kufuneka ubhalwe kwaye usayinwe ngokufanelekileyo.
- 6.9 IsekelaGosa leeNkcukacha kufuneka lenze isigqibo kwiintsuku ezingama-30 emva kokufumana isicelo kwaye lazise umceli ngesigqibo.
- 6.10 Isekela leGosa leeNkcukacha linokwandisa ixesha leentsuku ezingama-30 kube kanye kangangexesha elingaphezulu

elingekho ngaphezulu kweentsuku ezingama-30. Isekela leGosa leeNkcukacha kufuneka lazise umceli ngelo xesha lokwandiswa kunye nezizathu zoko.

**Izihlomelo ezifunekayo:**

- 6.11 Umfakisiselo kufuneka anikwe ufikelelo kwiirekhodi ze-ECPL ukuba eso sicelo sihambelana nazo zonke iimfuno zenkqubo, ingakumbi xa ukufikelela kuloo rekhodi kucacile ukuba akwaliwa nangayiphi na imihlaba echazwe kwiSahluko sesi-4 se-PAIA.
- 6.12 IFomu yesi-2 ezaliswe ngokupheleleyo (iSihlomelo A).
- 6.13 Ukuba isicelo senziwa egameni lomnye umntu okanye umntu osemthethweni, ubungqina besikhundla umfakisiselo enza ngaso isicelo, kufuneka buncanyathiselwe kwiFomu yesi-2.
- 6.14 Ikopi eqinisekisiweyo yesazisi somfakisiseloi.
- 6.15 Ubungqina bentlawulo yemali efunekayo.

**Iintlawulo**

- 6.16 Intlawulo yesicelo engabuyiswayo eli-R100.00 ( okanye enokuthi ilungiswe kumaxesha ngamaxesha ngesaziso esibhaliweyo) iyahlawulwa ngokusingisele kwisicelo ngasinye sokufikelela kwiinkcukacha okanye kwisibheni sangaphakathi esingeniswe kwiSekela leGosa leeNkcukacha.

- 6.17 Xa i-ECPL ifumana isicelo, umenzisicelo kufuneka aziswe, kusetyenziswa iFomu engunombolo 3 (iSihlomelo B) ukuba isicelo sivunyiwe okanye hayi, kwaye ukuba isicelo sivunyiwe, umenzisicelo kufuneka aziswe ukuba ahlawule idipozithi yofikelelo emiselweyo (ukuba ikho) njengoko kucacisiwe kwiSihlomelo C, phambi kokuba kuqwalaselwe ngakumbi isicelo.
- 6.18 Imvume yokuba umceli aqhubekeke kwisicelo sokufikelela iyanikwa kwabo baceli bazenezileyo iimfuno zoko kufunekayo njengoko kumiselwe yi-PAIA. Le mvume ayisebenzi kubantu abamelwe ngokusemthethweni, naphantsi kweemeko apho izivumelwano zentlawulo yokuba negqwetha kuye kwangenwa kuzo ngumceli kunye nokumelwa kwakhe ngumthetho.
- 6.19 Ukufikelela kwikopi yeerekhodi kuya kwalelwa de yonke imirhumo efunekayo ibe ihlawulwe ngokupheleleyo. Kukho imo eyahlukileyo kwabo baceli baxolelwe kwangaphambili kulo mba.
- 6.20 Umfakisicelo ongenelisekanga yintlawulo efunwayo unokufaka isibheni sangaphakathi ngokuchasene neso sigqibo, njengoko kuchaziwe kumhlathi ongezantsi.
- 6.21 Imirhumo kufuneka ihlawulwe kwi-akhawunti yebhanki ye-ECPL. Idiphozithi ifanele ichazwe ngokuchanekileyo, kwaye ubungqina bentlawulo nganye bungeniswe kwi-ECPL.

**6.22 Iinkcukacha zebhanki zomrhumo we-PAIA we-ECPL zimi ngolu hlobo lulandelayo:**

**Igama le-akhawunti : Indlu yoWisomthetho yePhondo leMpumakoloni**  
**Inombolo yeakhawunti : 62020125680**  
**Igama leSebe : KING WILLIAMS TOWN 264**  
**Ikhawudi yeSebe : 210519**  
**Inombolo yereferensi : PAIA (Igama elifinyeziweyo kunye nefani)**  
**Ubungqina beNtlawulo : kbeja@ecleg.gov.za**



## **7 IZISOMBULULO ZEXESHANA EZIKHOYO**

### **7.1 Isibheno sangaphakathi**

- 7.1.1 Apho umfakisicelo angonelisekanga sisiphumo sesicelo sokufikelela kwiinkcukacha, umceli unokufaka isibheno sangaphakathi ngokuchasene nesigqibo seSekela leGosa leeNkcukacha ngokuzalisa nokuhambisa iFomu yesi-4 (iSihlomelo D) kwisithuba seentsuku ezingama-60 kwiSekela leGosa leeNkcukacha.
- 7.1.2 Isibheno sangaphakathi singafakwa ngokuchasene naso nasiphi na kwezi zigqibo zilandelayo zikaSekela Gosa leeNkcukacha
- 7.1.2.1 Ukwala isicelo sofikelelo;
  - 7.1.2.2 Iintlawulo ezibizwayo;
  - 7.1.2.3 Ukwandiswa kwexesha lokujongana nesicelo; kwaye
  - 7.1.2.4 Ukufikelela ngendlela ethile
- 7.1.3 Umceli kufuneka ahlawule intlawulo emiselweyo yesibheno yangaphakathi (apho kufanelekileyo) xa efaka isibheno. Isigqibo sesibheno sangaphakathi sisenokumiswa de umrhumo uhlawulwe.
- 7.1.4 Ngokukhawuleza okunokwenzeka, kodwa kwiintsuku zokusebenza ezili-10 emva kokufumana isibheno sangaphakathi, iSekela leGosa leeNkcukacha kufuneka lingenise isibheno sangaphakathi kuSomlomo weNdlu yoWisomthetho yePhondo leMpumakoloni.
- 7.1.5 USomlomo kufuneka enze isigqibo ngesibheno sangaphakathi kwiintsuku ezingama-30 emva kokuba isibheno sangaphakathi sinikezelwe kwiSekela leGosa leeNkcukacha.

### **Isikhalazo kumLawuli weeNkcukacha**

7.1.6 Umceli unokungenisa isikhalazo kumLawuli leeNkcukacha ngokuzalisa ngokufanelekileyo aze anikezele iFomu yesi-5 (iSihlomo E), kodwa kuphela emva kokuba umceli esebenzise inkqubo yesibheni yangaphakathi ngokuchasene nesigqibo seSekela Gosa leeNkcukacha lwe-ECPL.

### **Ukuya eNkundleni**

7.1.7 Nangona i-ECPL icebisa ukuba abaceli bazame ukusombulula iingxabano malunga nokufikelela kwiinkcukacha ngaphandle kokuya kwiinkundla zamatyala, umenzisicelo unokuthi, ukuba akanangxaki, aye enkundleni emva kwenkqubo yesibheni yangaphakathi.

## **8 ISIKHOKELO SOMLAWULI WEENKCUKACHA**

8.1 UmLawuli, ngokwecandelo le-10 (1) le-PAIA, uhlaziyile waza wenza ukuba kufumaneka iSikhokelo esihlaziyiweyo. ngendlela yokusebenzisa i-PAIA (“iSikhokelo”), ngendlela eqondakala lula nangendlela eqondakala lula, njengoko isenokufunwa ngokufanelekileyo ngumntu onqwenela ukusebenzisa naliphi na ilungelo elixelwe kwi-PAIA nePOPIA.

8.2 Isikhokelo sifumaneka ngolwimi ngalunye kwiilwimi ezisemthethweni.

8.3 Esi sikhokelo sikhankanywe ngasentla siqulathe inkcazo-

8.3.1 iinjongo ze-PAIA kunye nePOPIA;

8.3.2 idilesi yeposi neyesitalato, inombolo yomnxeba neyefeksi kwaye, ukuba ikhona, idilesi ye-imeyile ye-elektroniki ye-

8.3.2.1 Gosa leeNkcukacha lwalo lonke iqumrhu loluntu, kunye

- 8.3.2.2 nawo onke amaSekela eGosa leeNkcukacha kuwo onke amaqumrhu karhulumente nawabucala atyunjwe ngokwecandelo le-17(1) lePAIA kunye necandelo 56 lePOPIA.
- 8.3.2.3 indlela kunye nohlobo lwesicelo sokufikelela kwirekhodi yequmrhu loluntu njengoko kuchazwe kwicandelo le-11; kwaye
- 8.3.2.4 ukufikelela kwirekhodi yequmrhu labucala elikhankanywe kwicandelo lama-50;
- 8.3.3 uncedo olufumanekayo kwiGosa leeNkcukacha lombutho woluntu ngokwe-PAIA nePOPIA;
- 8.3.4 uncedo olufumanekayo kumLawuli ngokwe-PAIA nePOPIA;
- 8.3.5 zonke izisombululo ezikhoyo emthethweni malunga nesenzo okanye ukusilela ukwenza ngokubhekiselele kwilungelo okanye umsebenzi onikwe okanye obekwe yi-PAIA nePOPIA, kubandakanywa nendlela yokufaka-
  - 8.3.5.1 isibheni sangaphakathi;
  - 8.3.5.2 isikhalazo kumLawuli; kunye
  - 8.3.5.3 nesicelo enkundleni esichasene nesigqibo segosa leenkcukacha lequmrhu loluntu, isigqibo sesibheni sangaphakathi okanye isigqibo somLawuli okanye isigqibo sentloko yequmrhu labucala;
- 8.3.6 izibonelelo zamacandelo le-14 kunye nelama-51 nokufuna ukuba iqumrhu likarhulumente kunye nequmrhu labucala, ngokulandelelanayo, baqulunqe incwadi, kunye nendlela yokufumana ufikelelo kwincwadana yemigaqo;
- 8.3.7 amalungiselelo amacandelo le-15 nelama-52 abonelela ngokubhengezwa ngokuzithandela kweendidi zeerekhodi liqumrhu likarhulumente kunye nequmrhu labucala, ngokulandelelanayo;

- 8.3.8 izaziso ezikhutshwe ngokwecandelo lama-22 nelama-54 malunga neentlawulo ekufuneka zihlawulwe ngokunxulumene nezicelo zokufikelela; kunye
- 8.3.9 nemimiselo eyenziwe ngokwecandelo lama-92.
- 8.3.10 Uluntu lungahlola okanye lwenze iikopi zesiKhokelo kwii-Ofisi zikawonke-wonke okanye zabucala, kubandakanywa ne-Ofisi yomLawuli, ngeeyure eziqhelekileyo zokusebenza. Isikhokelo sinokufumaneka-
- 8.3.10.1 ngesicelo kwiGosa leeNkcukacha;
- 8.3.11 kwiwebhusayithi yomLawuli ([www.inforegulator.org.za](http://www.inforegulator.org.za).)

**9 IMIBA ETHI INDLU YOWISOMTHETHO IGCINE IINGXELO NGAZO**

Izifundo apho iqumrhu liye ligcine khona iirekhodi	Iindidi zeerekhodi ezenziwa kumbandela ngamnye
Amaxwebhu abonisa indlela yokusebenza, iziCwangciso, iiNtetho kunye neeNgxelo ezisemthethweni	Izicwangciso ezinamacebiso okusebenza, IziCwangciso zokuSebenza zoNyaka; IziCwangciso zokuSebenza, lingxelo zoNyaka, Iintetho zomGaqonkqubo; IiNtetho zokuvulwa kweePalamente zePhondo;
Uphando	lingxelo zoHlalutyo loPhando
Izibonelelo zabasebenzi neeNkonzo zoShishino	<ul style="list-style-type: none"> <li>- Imigaqonkqubo kunye neeNkqubo zeHR;</li> <li>- Izithuba ezipapashiweyo;</li> <li>- Iirekhodi zokugaya abasebenzi</li> <li>- Iirekhodi zabaSebenzi;</li> <li>- Ukufunda noPhuhliso umz.: Uphuhliso lwezakhono neziCwangciso zoQeqesho;</li> </ul>

Izifundo apho iqumrhu liye ligcine khona iirekhodi	Iindidi zeerekhodi ezenziwa kumbandela ngamnye
	<ul style="list-style-type: none"> <li>- IsiCwangciso soBulungisa kwezeNgqesho kunye neeNkcukachamanani;</li> <li>- Incwadana yeendaba;</li> <li>- INkcukacha zoShishino;</li> <li>- Iingxelo zeendaba;</li> <li>- Iintetho neMiyalezo;</li> <li>- Iiflora zeMpilontle kunye neePowusta;</li> <li>- Iincwadana;</li> <li>- Ividiyo yeziganeko ezisemthethweni.</li> </ul>
Amaxwebhu eMali	<ul style="list-style-type: none"> <li>- Amaxwebhu enkcazelo ngezemali;</li> <li>- Iingxelo zoPhicothozincwadi;</li> <li>- Uhlahlo lwabiwomali;</li> <li>- Amaxwebhu oLawulo lweNtengo abandakanya iinkcukacha zeethenda, izibhengezo zeethenda, iirejista zobizo-maxabiso, ukufakwa kweebhidi, iingxelo zovavanyo lweebhidi, iingxelo zokugweba iibhidi, iileta zokuqeshwa, iileta eziya kwabo</li> </ul>

Izifundo apho iqumrhu liye ligcine khona iirekhodi	Iindidi zeerekhodi ezenziwa kumbandela ngamnye
	beethenda abangaphumelelanga, kunye neerekhodi zolawulo lwempahla.
Amaxwebhu okusebenza	<ul style="list-style-type: none"> <li>- Amaxwebhu omGaqonkqubo neNkqubo;</li> <li>- UNxibelelwano kunye neeRekhodi eziphathelele kwimiSebenzi ye-ECPL.</li> </ul>
Amaxwebhu asemthethweni	<ul style="list-style-type: none"> <li>- Izivumelwano;</li> <li>- Izimvo zomThetho;</li> <li>- Iirekhodi ezinxulumene nazo yonke imiba yamaTyala kunye neNkqubo yokuSombulula iiMbambano;</li> <li>- Iinkcukachamanani zamaTyala;</li> <li>- Imizuzu yeeNtlanganiso, ii-Ajenda;</li> <li>- Umthetho;</li> <li>- Amaxwebhu ePolisi;</li> <li>- Iinkqubo zokuSebenza eziMgangatho;</li> <li>- Iingxelo zeKomiti</li> <li>- Iingxoxo</li> </ul>

**10 IIREKHODI ZENDLU YOWISO MTHETHO EZIFUMANEKAYO NGAPHANDLE KOKUBA UMNTU KUFUNEKE ADE AFAKE ISICELO SOKUKUFIKELELA KUZO**

Iirekhodi ezikwiwebhusayithi yeNdlu yoWisomthetho yePhondo leMpumakoloni <https://www.eclegislature.gov.za> ziyafumaneka ukuze zijongwe okanye zikhutshelwe, ngaphandle kokuba umntu enze eso sicelo ngokomThetho oxeliweyo.

Udidi	Uhlobo loxwebhu	Iyafumaneka kwiWebhusayithi	Ifumaneka ngesicelo
Iindaba	<ul style="list-style-type: none"> <li>- Amanqaku eendaba kunye neengxelo</li> </ul>	X	
Iinkcukacha zajikelele	<ul style="list-style-type: none"> <li>- Iiprofayili zeKomiti Elawulayo</li> <li>- Iinkcukacha malunga neNdlu yoWisomthetho yePhondo leMpumakoloni</li> <li>- Iingxelo zamaLungu eNdlu yoWisomthetho yePhondo leMpumakoloni</li> <li>- Isigunyaziso se-ECPL</li> </ul>	X	

Udidi	Uhlobo loxwebhu	Iyafumaneka kwiWebhusayithi	Ifumaneka ngesicelo
	- Ingalo yeebhatyi		
Media	- lingxelo zemidiya - lifoto - limpapasho - lintetho - lividiyo	X	
Ukuthengwa kwempahla	- lithenda - UBhaliso loMboneleli - lifom	X	Iyafumaneka
Ihabhu yeeNkcukacha	- lingxelo - Izicwangciso - lifom	X	

Udidi	Uhlobo loxwebhu	Iyafumaneka kwiWebhusayithi	Ifumaneka ngesicelo
	<ul style="list-style-type: none"> <li>- Uhlahlo lwabiwo-mali</li> <li>- Imigaqonkqubo</li> </ul>		
Imisebenzi	<ul style="list-style-type: none"> <li>- Ukuqeshwa koLutsha (Internship) kunye noQeqesho</li> <li>- libhasari</li> <li>- Izithuba</li> <li>- Ukugaywa kwabantu ngetekhnoloji yale mihla</li> </ul>	X	
Umthetho / iMimiselo	<ul style="list-style-type: none"> <li>- UmGaqosiseko weRiphabliki yoMzantsi Afrika, 1996</li> <li>- I-FMPPLA;</li> <li>- I-LRA</li> <li>- EEA</li> </ul>		Iyafumaneka

Udidi	Uhlobo loxwebhu	Iyafumaneka kwiWebhusayithi	Ifumaneka ngesicelo
	<ul style="list-style-type: none"> <li>- ImiThetho eYilwayo engu-S76</li> <li>- ImiThetho eYilwayo yePhondo</li> </ul>		

## 11 IINKONZO EZIFUMANEKAYO KUMALUNGU OLUNTU NOKUBA LUNGAFIKELELA NJANI KWEZO NKONZO

I-ECPL inoxanduva lokuqingq umthetho, ukubeka iiso kunye nokuquzelela intathoxaxheba yoluntu. Malunga noqingqomthetho, iECPL ijongana nemiThetho eYilwayo yecandelo 76 kunye neyePhondo. Indlu yoWisomthetho kufuneka iququzelele intathoxaxheba yoluntu kwinkqubo yayo yoqingqomithetho. Oku kwenziwa ngeendibano zovakalisozomvo kunye nangezicelo ezithunyelwa ukufuna iziphakamiso ezibhaliweyo. Uluntu luyamenywa ukuze lungenise amanqaku angokuphawula kunye neziphakamiso ngomThetho oYilwayo ojongwe yiNdlu yoWisomthetho. Ikhwelo lokucela amanqaku okuphawula liye lipapashwe kwiwebhusayithi, kudliwanondlebe konomathotholo kunye nakumaqonga entungelwano asekuhlaleni. Iinkcukacha zoqhagamshelwano zomntu ekuthi kuthunyelwe kuye iziphakamiso makunikiswe ngazo xa amanqaku okuphawula ethe acelwa. ImiThetho eYilwayo kunye nezishwankathelo zemiThetho eYilwayo ejongwa yiNdlu yoWisomthetho zifumaneka kwiwebhusayithi yeNdlu yoWisomthetho; ethi [www.ecleg.gov.za](http://www.ecleg.gov.za) nakwamanye amaqonga entungelwano asekuhlaleni.

INdlu yoWisomthetho kufuneka ibonelele ngeendlela zokuqinisekisa okokuba isigqeba siyaphendula ngokusebenza kwaso kwiNdlu yoWisomthetho. Oku kwenziwa ngokwandlala iingxelo okwenziwa sisigqeba sisebenza ngeekomiti ezijongene nemicimbi ize iikomiti ezijongene nemicimbi zandlale iingxelo zazo kwiNdlu khon' ukuze zamkelwe. Ukongeza, iikomiti ezijongene nemiCimbi ziqhuba utyelelo lweziza ekusetyenzwa kuzo. Iintlanganiso zeekomiti ezijongene nemicimbi zivulelekile kuluntu. Ukuhlala kweNdlu yoWisomthetho nako kuvulelekile kuluntu.

INdlu yoWisomthetho iququzelela intathonxaxheba yoluntu. Oku kwenziwa ngenkquba yokuzisa iNdlu yoWisomthetho ebantwini inkqubo ebanjwa unyaka nonyaka kwizithili ngokokujikeleza kwezihlandlo. Uluntu lumenywa ukuze luthathe inxaxheba kule nkqubo kwaye luphakamisa neenkxalabo zalo. INdlu yoWisomthetho isingatha iipalamente zamacandelo isenzela amacandelo amaninzi nawahlukeneyo. Oku kwenzelwa ukuqinisekisa intathonxaxheba yamacandelo.

INdlu yoWisomthetho ixhotyiselwe ukwamkela kunye nokuqwalasela izibongozo. Le nkqubo iyafumaneka kumntu wonke ofuna ukufaka isibongozo kwiNdlu yoWisomthetho malunga nawuphi na umba onento yokwenza nonikezelo zinkonzo kwiPhondo leMpumakoloni. Uluntu lungathumela izibongozo zalo kuMhlonipheki uSomlomo; MPL Helen Sauls – August. Idilesi yeiyemile ithi zgarane@ecleg.gov.za.

## **12 UKUBANDAKANYWA KOLUNTU EKWENZIWENI KOMGAQONKQUBO OKANYE UKUSETYENZISWA KWAMANDLA OKANYE UKWENZIWA KOMSEBENZI YINDLU YOWISO MTHETHO YEMPUMA KOLONI**

12.1 I-ECPL yinxalenye yecandelo lowisomthetho likaRhulumente weMpumakoloni.

12.2 I-ECPL ithi kwinkqubo yokwenziwa komthetho icele izimvo zoluntu malunga nemithetho esayilwayo ngokuqhuba iindibano zovakalisozimvo kunye nokucela iziphakamiso ezibhaliweyo.

12.3 Uluntu lusenokuthi ngaphezulu luphembelele ngokuthe ngqo ukwenziwa komthetho okuthatha inxaxheba kwiindibano zovakalisozimvo zeNdlu yoWisomthetho yePhondo.

## **13 ULUNGISELELO LWEENKCUKACHA ZOMNTU**

### **13.1 Injongo yolungiselelo**

I-ECPL isebenzisa iinkcukacha ngomntu ezinxulumene nemisebenzi, kunye nemisebenzi ye-ECPL, echazwe kumhlathi we-12 apha ngasentla.

### 13.2 Inkcazelo

Inkcazelo yeendidi zezifundo zedatha kunye neenkukacha okanye iindidi zeenkukacha ezinxulumene nazo zibekwe kwitheyibhile engezantsi:

Amacandelo eziHloko zeDatha	Iinkcukacha Ngomntu ezinokulungiselelwa
Abantu ngokwendalo	Igama nefani; iinkcukacha zoqhagamshelwano (i/iinombolo zoqhagamshelwano), inombolo yefeksi, idilesi ye-imeyile); idilesi yokuhlala, yeposi kunye/okanye yeshishini; inombolo eyodwa yokuchonga; ulwazi lwendawo; uhlanga; isini; ukukhulelwa; ubume obuxela ukuba utshatile okanye awutshatanga; ubuzwe okanye imvelaphi yentlalo; umbala, ukwaziswa ngezesondo; ubudala, impilo yomzimba okanye yengqondo; intlalontle; ukukhubazeka; inkolo; isazela; inkolelo; inkcubeko; ulwimi; ukuzalwa; imbalelwano eyimfihlo; imfundo; yezonyango, yezemali, yolwaphulo-mthetho okanye imbali yengqesho kubandakanywa nezinokuthi zifunwe kwiNkqubo yoBhaliso lweZigulane yeSebe lezeMpilo.

Amacandelo eziHloko zeDatha	Iinkcukacha Ngomntu ezinokulungiselelwa
Abantu ngokomthetho	Amagama abantu ekuqhagamshelwana nabo; igama lequmrhu elisemthethweni; idilesi yendawo kunye neyeposi; iinkcukacha zoqhagamshelwano (iinombolo zoqhagamshelwano), inombolo yefeksi, idilesi ye-imeyile; inombolo yobhaliso; iinkcukacha zezemali, lwezorhwebo, lwenzululwazi okanye lobugcisa kunye neemfihlo zorhwebo.
Abasebenzi	Isini, ukukhulelwa; Ubume obuxela ukuba utshatile okanye awutshatanga; uhlanga; ubudala, ulwimi, iinkcukacha zezemfundo (iziqinisekiso); iinkcukacha zemali; Imbali yokuqeshwa; inombolo yesazisi; idilesi yendawo kunye neyeposi; iinkcukacha zoqhagamshelwano (iinombolo zoqhagamshelwano), inombolo yefeksi, idilesi ye-imeyile; ukuziphatha kolwaphulomthetho; intlalontle nezalamane zakhe (amalungu entsapho); uhlanga; ezonyango; isini; ubuzwe; imvelaphi yobuhlanga okanye yentlalo; ukwaziswa ngezesondo; ubudala, impilo yomzimba okanye yengqondo; ukuphila kakuhle; isiphene; inkolo; isazela; inkolelo; inkubeko; ulwimi; iinkcukacha zebhayometriki yomntu

<b>Amacandelo eziHloko zeDatha</b>	<b>Iinkcukacha Ngomntu ezinokulungiselelwa</b>
	njengoko lufuneka kwimimiselo nemigaqonkqubo yenkonzo karhulumente.

### 13.3 Abamkeli

Abamkeli okanye iindidi zabamkeli ekunokuthi kunikezelwe kubo iinkcukacha ngomntu zichaziwe kwitheyibhile engezantsi:

<b>Udidi lweenkcukacha ngomntu</b>	<b>Abamkeli okanye iindidi zabamkeli</b>
Iinombolo zesazisi, amagama, iidilesi, ingqesho kunye nembali yemfundo yokuhlolwa kolwaphulomthetho.	Iinkonzo zamaPolisa aseMzantsi Afrika kunye nezinye ii-arhente zogcinomthetho
Iziqinisekiso, zilungiselela xa kukhangelwa ubunyani beziqinisekiso.	UGunyaziwe wemiGangathomfundo yaseMzantsi Afrika.
Iinombolo zesazisi, amagama kunye needilesi.	Ababoneleli kunye nababoneleli ngeenkonzo (kubandakanywa abameli bomthetho kwimiba yesimangalo) abane-OTP enobudlelwane

Udidi lweenkcukacha ngomntu	Abamkeli okanye lindidi zabamkeli
	besivumelwano, ukuze babe nokufikelela kwiinkcukacha ngomntu.
Iinkcukacha zezonyango	Amaqela omthetho asebenza egameni le-ECPL.
Iinkcukacha zabasebenzi	Iibhanki kunye namanye amaziko emali, abalawuli bengxowamali yomhlalaphantsi, imibutho yabasebenzi

#### 13.4. Ukudluliselwa kweenkcukacha ngaphaya kwemida

- 13.4.1. I-ECPL ayicwangcisa ngakumbi na ukuhamba kweenkcukacha ngomntu ziye ngaphaya kwemida. Nangona kunjalo, ukuba kuye kwafuneka ukuba kudluliselwe iinkcukacha ngomntu kwelinye ilizwe ngazo naziphi na iinjongo ezisemthethweni, i-ECPL iya kuqinisekisa ukuba nabani na edlulisela kuye inkcazelo ngomntu, oko kwenzeka ngokusemthethweni, ngemigaqo ebophelelayo yequmrhu okanye isivumelwano esibophelelayo esibonelela ngenqanaba elaneleyo lokhuseleko, kwaye nalowo unikwayo uyavuma ukuphatha ezo nkcukachai ngomntu ngenqanaba elifanayo lokhuseleko, njengoko i-ECPL inyanzelekile koku phantsi kwePOPIA.
- 13.4.2. Nakuphi na ukwenzeka kokudluliselwa kweenkcukacha ngomntu kuya kuba nemvume yesifundo sedatha okanye ukuba ukudluliselwa kuyimfuneko kwisigqibo okanye ukusebenza kwesivumelwano esigqitywe phakathi kwe-ECPL kunye neqela lesithathu kwintshisekelo yesifundo sedatha. Nangona kunjalo, ukuba akululanga ukufumana imvume yesifundo sedatha, i-ECPL

iya kuludlulisela iinkcukacha ngomntu, ukuba ukuhanjiswa oko kuya kuba yinzuzo yesifundo sedatha, kwaye umxholo wedatha uya kuyinika imvume, xa kunokwenzeka ngokufanelekileyo ukufumana imvume enjalo.

### **13.5. Amanyathelo oKhuseleko lweenKcukacha**

- 13.5.1. I-ECPL iqhubeka iseka kwaye igcina amanyathelo afanelekileyo obugcisa kunye nawombutho ngokuthatha amanyathelo okuthintela:
  - 13.5.1.1. ukulahlekelwa, umonakalo okanye ukutshatyalaliswa okungagunyaziswanga kweenkcukacha ngomntu; kunye
  - 13.5.1.2. nokufikelela ngokungekho mthethweni okanye ukusetyenzwa kweenkcukacha ngomntu.
  
- 13.5.2. I-ECPL ithathe amanyathelo afanelekileyo, njengoko kukhankanyiwe kwimihlathi ye-14.2. kunye ne-14. 3, ukuze:
  - 13.5.2.1. ichonge yonke imingcipheko elindelekileyo yangaphakathi neyangaphandle kweenkcukacha ngomntu ekulo okanye ephantsi kolawulo lwayo;
  - 13.5.2.2. iseke kwaye igcine izikhuselo ezifanelekileyo kwimingcipheko echongiweyo;
  - 13.5.2.3. iqinisekise rhoqo ukuba izikhuselo ziphunyezwa ngokufanelekileyo; kwaye
  - 13.5.2.4. iqinisekise ukuba izikhuselo zihlaziywa rhoqo ukuze ukuzingqamanisa nemingcipheko emitsha okanye kujongwe noko bekusilela kwizikhuselo ebeziphunyeziwe ngaphambili.
  
- 13.5.3. Amanyathelo athathwe yi-ECPL aquka:
  - 13.5.3.1. Ulawulo loFikelelo;
  - 13.5.3.2. Ufihlo lweenkcukacha;
  - 13.5.3.3. Amanyathelo oKhuselo;
  - 13.5.3.4. UkuBeka iliso okuqinileyo, ukuPhicotha nokuNika iNgxelo ngezakhono;
  - 13.5.3.5. Ugcino lwedatha engulindela;

13.5.3.6. Izisombululo ze-Anti-virus kunye neze-Anti-malware;

13.5.3.7. Ukuqaphela kunye nokuphaphama; kunye

13.5.3.8. Nezivumelwano ezigqitywe nabaSebenzisi ukuphumeza ulawulo lokhuseleko.

#### 14. UKUFUMANEKA KWENCWADANA

14.4. Le Ncwadana iya kuthi kwakamsinya emva kokuvunywa kwayo ifumaneke ngezi lwimi zintathu zisemthethweni zilandelayo –

15.1.1. IsiNgesi;

15.1.2. IsiXhosa

15.1.3. Isibhulu

14.5. Inguqulelo yesiNgesi yale Ncwadana ifumaneka ngokukhawuleza ngolu hlobo lulandelayo-

15.2.1. kwiwebhusayithi: [https:// www.eclegislature.gov.za](https://www.eclegislature.gov.za)

15.2.2. kwii-ofisi zoWisomthetho zePhondo leMpumakoloni ukuze zihlolwe nguwonkewonke ngamaxesha omsebenzi;

15.2.3. kuye nawuphi na umntu ngesicelo naxa eyenzile intlawulo yomrhumo omiselweyo nofanelekileyo; na

15.2.4. kuMlawuli weeNkcukacha ngesicelo.

14.6. Umrhumo wekopi yoMqulu, njengoko kuchaziwe **kwiSihlomelo C** uya kuhlulwa, ngefotokopi nganye eyenziweyo yobukhulu obungu-A4.

**15. UKUHLAZIYWA KWENCWADANA**

I-ECPL iya kuthi, ukuba kukho imfuneko, ihlaziye kwaye ipapashe le ncwadana yemigaqo rhoqo ngonyaka.

**Ikhutshwe ngu**



**NOMAWETHU NGCAKANI ( MRS)**

**UNOBHALA WOMTHETHO WEPHONDO LEMPUMAKOLONI**

28/01/2026

**UMHLA**

**ISIHLOMELO A – IFOMU YESI-2**

**IFOMU YESI-2**  
**ISICELO SOKUFIKELELA KWIREKHODI**

[UMgqaliselo we-7.]

Qaphela:

1. *Ubungqina besazisi kufuneka buncanyatheliswe ngumceli.*
2. *Ukuba izicelo zenziwa egameni lomnye umntu, ubungqina bolu gunyaziso kufuneka buqhotyoshelwe kule fomu.*

IYA KU:

Sekela Gosa  
leeNkcukacha

---

---

---

---

(Idilesi)

Idilesi yelmeyile:  
Inombolo yefeksi:

---

---

Phawula ngo "X"

Isicelo senziwa egameni lam

Isicelo  
senziwa  
egameni  
lomnye  
umntu

<b>INKCUKACHA ZOMNTU</b>	
Amagama apheleleyo:	
Inombolo yesazisi:	
Isizathu sokwenza isicelo ( <i>xa senziwa egameni lomnye umntu</i> ):	
Idilesi yeposi:	
Idilesi yesitalato:	
Idilesi yelmeyile:	

Inombolo zoqhagamshelwano:	Umnxeba. (B):		Ifeksi:
	ISelula:		
Amagama apheleleyo omntu isicelo esenziwa egameni lakhe ( ukuba <i>kufanelekile</i> ):			
Inombolo yesazisi:			
Idilesi yeposi:			
Idilesi yesitrato:			
Idilesi yemeyile:			
Inombolo zoqhagamshelwano:	Umnxeba. (B):		Ifeksi:
	ISelula:		
<b>IINKCUKACHA ZEREKHODI ECELIWEYO</b> <i>Bonelela ngeenkukacha ezipheleleyo zerekhodi ekucelwa ukufikelela kuyo, kuquka nenombolo yereferensi ukuba uyayazi, ukwenzela ukuba irekhodi ifumaneki. (Ukuba isithuba esinikiweyo asanelanga, uqhubeka kwiphepha elahlukileyo uze ulincamathele kule fom. Onke amaphepha ongezelelweyo mawasayinwe.)</i>			
Inkcazo yerekhodi okanye inxalenye efanelekileyo yerekhodi:			
Inombolo yereferensi, ukuba ikhona:			
Naziphi na ezinye iinkcukacha zerekhodi:			

### UHLOBO LWEREKHODI

(Makisha ibhokisi efanelekileyo ngo-"X")

Ingxelo ibhaliwe okanye ishicilelwe

Ingxelo iquka imifanekiso ebonakalayo (oku kuquka iifoto, izilayidi, ushicilelo lwevidiyo, imifanekiso eyenziwe ngekhompyutha, imizobo, njl.njl.)

Ingxelo iqulathe amagama arekhodiweyo okanye iinkcukacha ezinokuthi ziveliswe kwakhona ngesandi

Ingxelo igcinwe kwikhompyutha okanye ngeendlela zobuchwepheshe, okanye ifomu efundeka ngomatshini

### IFOMU YOKUFIKELELA

( Phawula ibhokisi efanelekileyo ngo "X" )

Ikopi eprintiweyo yerekhodi (kubandakanywa iikopi zayo nayiphi na imifanekiso ebonakalayo, ushicilelo kunye neenkukacha ezigcinwe ekhomyutheni okanye kwifomu yombane okanye efundeka ngomatshini)

Ushicilelo olubhaliweyo okanye olushicilelweyo lwemifanekiso ebonakalayo (oku kuquka iifoto, izilayidi, ushicilelo lwevidiyo, imifanekiso eyenziwe ngekhompyutha, imizobo, njl.njl.)

Ukukhutshelwa kwengoma zesandi (uxwebhu olubhaliweyo okanye olushicilelweyo)

Ikopi yerekhodi kwi-flash drive (kubandakanywa nemifanekiso ebonakalayo kunye neengoma zesandi)

Ikopi yerekhodi kwi-compact disc drive (kubandakanywa nemifanekiso ebonakalayo kunye neengoma zesandi)

Ikopi yerekhodi egcinwe kwiseva yokugcina ilifu

### INDLELA YOKUFIKELELA

( Phawula ibhokisi esebenzayo ngo "X" )

Ukuhlolwa kobuqu berekhodi kwidilesi ebhalisiweyo yequmrhu loluntu (kuquka ukumamela amagama ashicilelweyo, iinkcukacha ezinokuthi ziphinde ziveliswe ngesandi, okanye iinkcukacha ezigcinwe kwikhompyutha okanye kumatshini wobuchwepheshe okanye kwifomu efundeka ngomatshini)

Inkonzo zeposi kwidilesi yeposi

Inkonzo zeposi kwidilesi yesitalato

Inkonzo yekhuriya kwidilesi yesitalato

Ifeksi yeenkcukacha ngefomathi ebhaliweyo okanye eprintiweyo (kuquka noshicilelo )

I-imeyile yeenkcukacha (kuquka neengoma ukuba kunokwenzeka )

Ulwabelwano lweCloud/Udluliselo lwefayile

Ulwimi olukhethwayo:

(Qaphela ukuba xa irekhodi ingafumaneki ngolwimi olukhethayo, ukufikelela kunokunikezelwa ngolwimi efumaneka ngalo irekhodi)

### IINKCUKACHA ZELUNGELO ELINOKUSEBENZA OKANYE LIKHUSELWE

Ukuba isithuba esinikiweyo asonelanga, nceda uqhubeke kwiphepha elahlukileyo uze uliqhoboshele kule Fomu. Umceli makasayine onke amaphepha ongezelelweyo.

Bonisa ukuba leliphu na ilungelo ekufuneka eliza kusetyenziswa okanye eliza kukhuselwa:

Cacisa ukuba kutheni irekhodi eliceliweyo lifunwa ekusebenzeni okanye ekukhuseleni eli lungelo likhankanywe ngasentla:	

<b>IMALI</b>	
<p>a) Umrhumo wesicelo kufuneka uhlawulwe phambi kokuba isicelo siqwalaselwe.</p> <p>b) Uya kwaziswa ngesixa semali yofikelelo ekufuneka ihlawulwe.</p> <p>c) Umrhumo ohlawulelwa ukufikelela kwirekhodi uxhomekeke kuhlobo olufunwa ngayo ufikelelo kunye nexesha elifanelekileyo elifunekayo lokukhangela nokulungisa irekhodi.</p> <p>d) Ukuba ufanelekile ukuba ukhululwe kwintlawulo yayo nayiphi na intlawulo, nceda uchaze isizathu sokuba ukhululwe.</p>	
Isizathu:	

Uya kwaziswa ngembalelwano ukuba isicelo sakho samkelwe okanye saliwe kwaye ukuba sivunyiwe waziswe ngeendleko ezinxulumene nesicelo sakho, ukuba zikhona.  
Nceda ubonise indlela oyikhethayo yembalelwano:

idilesi yeposi	Ifeksi	Unxibelelwano ngombane (Nceda ucacise)

Isayinwe e \_\_\_\_\_ ngolu suku lwe/lwama \_\_\_\_\_ 20 \_\_\_\_\_

Utyikityo lomceli / Umntu owenzelwa isicelo

### EYOKUSETYENZISWA NGOKUSEMTHETHWENI

Inombolo yereferensi:	
-----------------------	--

Isicelo sifunyenwe ngu: ( <i>isikhundla sikarhulumente, igama kunye nefani yeSekela leGosa leeNkcukacha</i> )	
Umhla esifunyenwe ngawo:	
Imirhumo yokufikelela:	
Idiphozithi (ukuba ikhona):	

.....

*Utyikityo lukaSekela Gosa  
leeNkcukacha*

IFOMU YESI – 3  
ISIPHUMO SESICELO KUNYE NEMALI EHLAWULWAYO

[ [Ummiselo 8.](#) ]

Qaphela:

1. Ukuba isicelo sakho siphumelele  
-  
(a) isixamali sediphozithi,( ukuba ikhona ), siyahlawulwa phambi kokuba isicelo sakho sisetyenzwe kwaye  
(b) irekhodi eceliweyo/inxalenye yerekhodi, iya kukhutshwa kuphela xa ubungqina bentlawulo epheleleyo bufunyenwe.
2. Nceda usebenzise inombolo yereferensi elapha ngezantsi kuzo zonke iimbalelwano zexesha elizayo.

IYA KU:

\_\_\_\_\_

\_\_\_\_\_

\_\_\_\_\_

\_\_\_\_\_

Isicelo sakho, somhla \_\_\_\_\_,  
siyalandela

**1. Ubufake isicelo:**

Ukuhlolwa kweenkcukacha ngomntu kwidilesi yoluntu ebhalisiweyo (kuquka ukuphulaphula kumazwi arekhodiweyo, okanye iinkcukacha ezinokuveliswa kwakhona kwisandi, okanye iinkcukacha ezikwikhompuyutha okanye kwisixhobo esisebenza ngombane okanye kwimo efundeka ngomatshini ) efumaneka simahla. Uyacelwa ukuba wenze idinga ukuze kuhlolwe iinkcukacha kwaye uze nale Fomu/ nolu Xwebhu kunye nawe. Ukuba ke ngoko ufuna naluphi na uhlobo lokwenziwa ngokutsha kweenkcukacha, uya kuba noxanduva lwemirhumo echazwe kwisiHlomelelo B semiGaqo.

**OKANYE**

**2. Ubufake isicelo:**

Iikopi ezishicilelweyo zeenkcukacha (kuquka neekopi zayo nayiphi na imifanekiso ebonakalayo, imibhalo ekhutshelweyo neenkcukacha ezikwikhompuyutha okanye kumatshini wombane okanye okwimo efundekayo ngomatshini.

Ushicilelo olubhaliweyo okanye oluprintiweyo lwemifanekiso ebonakalayo (oku kuquka iifoto, izilayidi, ushicilelo lwevidiyo, imifanekiso eyenziwe ngekhompuyutha, imizobo, njl.njl.)

Ushicilelo lwengoma yesandi (uxwebhu olubhaliweyo okanye olushicilelweyo)

Iikopi yeenkcukacha ezikwi-flash drive ( kuquka imifanekiso ebonakalayo kunye neengoma)

Iikopi yeenkcukacha ezikwi-compact disc drive ( kuquka imifanekiso ebonakalayo kunye neengoma)

Iikopi yerekhodi egcinwe kwiseva yeCloud.

### 3. Iya kungeniswa:

linkonzo zeposi kwidilesi yeposi
linkonzo zeposi kwidilesi yesitalato
Inkonzo yekhuriya kwidilesi yesitalato
Ifeksi yeenkcukacha kwifomathi ebhaliweyo okanye eshicilelweyo ( <i>kuquka imibhalo</i> )
I-imeyile yeenkcukacha ( <i>kuquka iingoma zesandi ukuba kunokwenzeka</i> )
Ulwabelwano lweCloud/Udluliselo lwefayile
 Ulwimi olukhethwayo: ( <i>Qaphela ukuba xa irekhodi ingafumaneki ngolwimi olukhethayo, ukufikelela kunokunikezelwa ngolwimi efumaneka ngalo irekhodi</i> )

Nceda uqaphele ukuba isicelo sakho:

Sivunyiwe

Saliwe, ngenxa yezi zizathu  
zilandelayo:


### 4. Imali ehlawulwayo ngokunxulumene nesicelo sakho:

<b>Into</b>
Ifotokopi
Ikopi eshicilelweyo
Ngekopi yefomu efundekayo kwikhompyutha: ( i ) Kwi-Flash Drive Iza kubonelelwa ngumceli (ii) Kwi-Compact disc (Kwicwecwe) Ukuba uyinikiwe ngumceli Ukuba uyinikiwe umceli
Kushicilelo lwemifanekiso ebonwayo ngokwephepha lobungakanani be-A4
Ikopi yemifanekiso ebonakalayo
Ushicilelo lwerekhodi evakalayo, ngokobungakanani be-A4
Ngekopi yerekhodi evakalayo ( i ) I-Flash Drive Iza kubonelelwa ngumceli

(ii) Icwecwe eliyi Compact disc Ukuba unikwe ngumceli Ukuba unikwe umceli
Iposi, i-imeyile okanye naluphi na olunye udluliselo lwe-elektroniki:
<b>IYONKE:</b>

**5. Idiphozithi iyahlawulwa (ukuba ukukhangela kungaphezulu kweeyure ezintandathu):**

Ewe

Iyure zokukhangela	
-----------------------	--

Isixamali kufuneka sihlawulwe kule akhawunti yeBhanki ilandelayo:

Igama lomnini we-akhawunti:

I-Ofisi yeNkulumbuso

yeMpumakoloni

ABSA BANK

Inombolo ye-

akhawunti: 41-0021-

5080

Ikhawudi yeSebe:

I-ABS EC

ICANDELO

LOLUNTU

632005

Ireferensi

enguNr:

PAIA (Igama

kunye nefani)

Ngenisa ubungqina bentlawulo

ku:

Rupert.fortune@ecotp.gov.za

Isayinwe e \_\_\_\_\_ ngolu suku \_\_\_\_\_ 20 \_\_\_\_\_

\_\_\_\_\_  
*Usekela Gosa  
leeNkcukacha*

**ISIHLOMELO B - IINTLAWULO**

**Iintlawulo egameni loLuntu**

<b>Into</b>	<b>Inkcazo</b>			<b>Isixa</b>
1.			Umrhumo wesicelo ohlawulwa ngumceli ngamnye	R100.00
2.			Ifotokopi yephepha elinobukhulu be-A4	R1.50 ngephepha okanye inxalenye yayo.
3.			Ikopi eprintiweyo yephepha elinobukhulu be-A4	R1.50 ngephepha okanye inxalenye yayo.
4.			Ngekopi ekwifomu efundeka ngekhompyutha kwi: (i) flash drive (iya kubonelelwa ngumceli)	R40.00
			(ii)Icwecwe eliyi compact disc	
			· Ukuba liziswe ngumceli	R40.00
			· Ukuba linikwe umceli	R60.00
5.			Kushicilelo lwemifanekiso ebonwayo ngokwephepha lobungakanani be-A4.	Inkonzo iza kunikwa abantu bangaphandle.
6.			Ikopi yemifanekiso ebonakalayo.	Kuya kuxhomekeka kwisinikimaxabiso esivela kumniki weeNkonzo.
7.			Ushicilelo lwerekhodi emanyelwayo, ngokwephepha elinobungakanani be-A4.	R24.00
8.	( i )	(ii)	Ikopi yerekhodi yesandi kwi: Fleshi-drive (iya kubonelelwa ngumceli)	R40.00
			Icwecwe lecwecwe	
			· Ukuba liziswe ngumceli	R40.00
			· Ukuba linikwe umceli	R60.00
9.			Ukukhangela nokulungiselela ingxelo ukuze idizwe ngeyure nganye okanye inxalenye yeyure, ngaphandle kweyure yokuqala, efunekayo ngokufanelekileyo kuphando nolungiselelo olunjalo.	R100.00
			Ukungagqithi kwiindleko zizonke ze	R300.00
10.			Idiphozithi: Ukuba ukukhangela kudlula iiyure ezi-6	Isinye kwisithathu semali ngesicelo ngasinye esibalwa ngokwezinto 2 ukuya ku-8.
11.			Iposi, i-imeyile okanye naluphi na olunye udluliselo lwe-elektroniki	Iindleko ezizizo, ukuba zikhona.

**Iintlawulo ngokubhekiselele kumaQela aBucala**

<b>Into</b>	<b>Inkcazo</b>			<b>Isixa</b>
1.			Umrhumo wesicelo ohlawulwa ngumceli ngamnye	R140.00

2.			Ifotokopi/eprintiweyo ikopi emnyama namhlophe yobukhulu be-A4	R2.00 Ngephepha okanye inxalenye yalo
3.			Ikopi eprintiweyo yephepha elibukhulu be-A4	R2.00 ngephepha okanye inxalenye yalo
4.	(iii)		Ukufumana ikopi kwifomu efundeka ngekhompyutha: I-flash drive (iya kubonelelwa ngumceli)	R40.00
	(iv)		Icwecwe lecwecwe Ukuba unikwe ngumceli	R40.00
			Ukuba unikwe umceli	R60.00
5.			Kushicilelo lwemifanekiso ebonwayo ngokwephepha lobungakanani be-A4	Inkonzo iza kunikwa abant bangaphandle Kuya kuxhome keka kwikoteyishini evela kumniki weNkonzo.
6.			Ikopi yemifanekiso ebonakalayo	
7.			Ushicilelo lwerekhodi emanyelwayo, ngokwephepha lobungakanani be-A4	R24.00
8.	(v)		Ikopi yerekhodi yesandi kwi: I-flash drive (iya kubonelelwa ngumceli)	R40.00
	(vi)		Icwecwe lecwecwe Ukuba unikwe ngumceli	R40.00
			Ukuba unikwe umceli	R60.00
9.			Ukukhangela nokulungiselela ingxelo ukuze idizwe ngeyure nganye okanye inxalenye yeyure, ngaphandle kweyure yokuqala, efunekayo ngokufanelekileyo kuphando nolungiselelo olunjalo.	R145.00
			Ukungagqithi kwiindleko zizonke	R435.00
10.			Idiphozithi: Ukuba ukukhangela kudlula iiyure ezi-6	Isinye kwisithathu semali ngesicelo ngasinye esibalwe ngokwezinto 2 ukuya ku-8.
11.			Iposi, i-imeyile okanye naluphi na olunye udluliselo lwe-elektroniki	Iindleko ezizizo, ukuba zikhona.

### ISHLOMELO C – IINTLAWULO

**ISIHLOMELO D – ISIBHENO SANGAPHAKATHI  
IFOMU YESI-4**

**UKUFAKA ISIBHENO SANGAPHAKATHI**

[Ummiselo wesi-9.]

Inombolo yereferensi: \_\_\_\_\_

<b>IINKCUKACHA ZEQELA LOLUNTU</b>			
Igama lequmrhu loluntu:			
Igama nefani yeSekela leGosa leeNkcukacha:			
<b>IINKCUKACHA ZOMKHALAZI OFAKA ISIBHENO SANGAPHAKATHI</b>			
Amagama apheleleyo:			
Inombolo yesazisi:			
Idilesi yeposi:			
Inombolo zoqhagamshelwano:	Umnxeba. (B):		Ifeksi:
	ISelula:		
Idilesi ye-Imeyile:			
Ngaba isibheno sangaphakathi sifakwa egameni lomnye umntu?	Ewe	<input type="checkbox"/>	Hayi <input type="checkbox"/>
Ukuba impendulo ngu-ewe, amandla okuba isibheno sangaphakathi sifakwe egameni lomnye umntu: ( <i>Ubungqina bamandla okufakwa kwesibheno, ukuba kuyafuneka oko, makuqhotyoshelwe.</i> )			
<b>IINKCUKACHA ZOMNTU OKUVULWA ISIBHENO SANGAPHAKATHI EGAMENI LAKHE ( Ukuba isibheno singeniswe ngomnye umntu)</b>			
Amagama apheleleyo:			
Inombolo yesazisi:			
Idilesi yeposi:			
Inombolo zoqhagamshelwano:	Umnxeba. (B):		Ifeksi:
	ISelula:		
Idilesi yemeyile:			
<b>ISIGQIBO ESICHASANAYO NOKUFAKWA KWESIBHENO SANGAPHAKATHI ( phawula ibhokisi efanelekileyo ngo "X" )</b>			
Ukwaliwa kwesicelo sofikelelo:			
Isigqibo malunga neentlawulo ezimiselweyo ngokwecandelo lama-22 lomThetho:			
Isigqibo malunga nokwandiswa kwexesha ekufuneka isicelo sisetenzwe ngalo ngokwecandelo lama-26 (1) lomThetho:			
Isigqibo ngokwecandelo lama-29(3) lomThetho sokwala ukufikelela ngendlela ecelwe ngumceli:			
Isigqibo sokusivuma isicelo sofikelelo:			

**IMIHLABA EVUMELA ISIBHENO** ( Ukuba isithuba esinikiweyo asanelanga, nceda uqhubeke kwiphepha elilelinye ukuze ulincamathele kule fomu, onke amaphepha ongezelelweyo makasayinwe.)

Chaza imihlaba esisekelwe phezu kwayo isibheno sangaphakathi:	
Xela naziphi na ezinye iinkcukacha ezinokuba izianelekile xa kuqwalaselwa isibheno:	

Uya kwaziswa ngembalelwano ngesigqibo sesibheno sakho sangaphakathi. Nceda ubonise indlela oyikhethayo yokwazisa:

idilesi yeposi	Ifeksi	Unxibelelwano lwe-elektroniki ( Nceda cacisa )

Isayinwe e- \_\_\_\_\_ ngolu suku lwe- \_\_\_\_\_ 20 \_\_\_\_\_

Umsayino wombheni/walowo umele  
umbheni

**EYOKUSETYENZISWA NGOKUSEMTHETHWENI  
INGXELO ESEMTHETHWENI YESIBHENO SANGAPHAKATHI**

Isibheno samkelwe ngu: (chaza isikhundla, igama kunye nefani yeSekela leGosa leeNkcukacha)	
Umhla wokwamkelwa:	

Isibheno sikhathshwa zizizathu zesigqibo seSekela leGosa leeNkcukacha kwaye, apho kufanelekileyo, iinkcukacha zakhe namphi na umntu ongummeli onxulumene nerekhodi, zingeniswe nguSekela Gosa leeNkcukacha:	Ewe	
	Hayi	

**ISIPHUMO SESIBHENO**

Ukwaliwa kwesicelo sofikelelo. Kuqinisekisiwe?	Ewe		Isigqibo esitsha ( <i>ukuba akuqinisekiswa</i> )	
	Hayi			
Iintlawulo (Icand. lama-22). Ziqinisekisiwe?	Ewe		Isigqibo esitsha ( <i>ukuba aziqinisekiswa</i> )	
	Hayi			
Ulwandiso (Icand.lama-26 (1)). Luqinisekisiwe?	Ewe		Isigqibo esitsha ( <i>ukuba aluqinisekiswa</i> )	
	Hayi			
Ukufikelela (Icand.lama-29 (3)). Kuqinisekisiwe?	Ewe		Isigqibo esitsha ( <i>ukuba akuqinisekiswa</i> )	
	Hayi			
Isicelo sofikelelo sivunyiwe. Kuqinisekisiwe?	Ewe		Isigqibo esitsha ( <i>ukuba akuqinisekiswa</i> )	
	Hayi			

Isayinwe e \_\_\_\_\_ ngolu suku lwe \_\_\_\_\_ 20 \_\_\_\_\_

---

*Igunya elifanelekileyo*

## ISIHLOMELo E – ISIKHALAZO

### IFOMU 5

#### UKUFAKA ISIKHALAZO

[Ummiselo we-10.]

**Qaphela:**

1. *Le fomu yenzelwe ukunceda lowo ufaka sicelo (ekubhekiswa kuye nje "ngoMmangali") ekuceleni uqwalaselo ngokutsha lwempendulo yequmrhu likarhulumente okanye labucala okanye ukungaphendulwa kwesicelo sokufikelela kwiirekhodi phantsi komThetho wokuPhakanyiswa koFikelelo kwiiNkcukacha, wama-2000. (UmThetho Nombolo yesi-2 wama-2000) ("PAIA"). Nceda ugcwalise le fomu uze uyithumele kumLawuli weeNkcukacha okanye ugcwalise ifomu yesikhalazo kwi-intanethi efumaneka ku-<https://www.justice.gov.za/inforeg/>.*
2. *I-PAIA inika ilungu loluntu ilungelo lokufaka isikhalazo kumLawuli weeNkcukacha malunga nalo naluphi na uhlobo lwezikhalazo ezichazwe kwinqanaba E lale fomu yesikhalazo.*
3. *Kungumgaqonkqubo womLawuli weeNkcukacha ukuhlehlisa ukuphanda okanye ukukhaba isikhalazo ukuba umMangali akaqalanga wanika iqumrhu loluntu okanye iziko labucala (elibizwa apha ngokuba "yiBhodi/liZiko") ithuba lokuphendula kunye nokuzama ukusombulula lo mba. Ukunceda iZiko liqwalasele izinto ezikuxhalabisayo phambi kokuba uye kumLawuli weeNkcukacha, kufuneka ugcwalise ifomu emiselweyo ye-PAIA, uze uyingenise kwiZiko.*
4. *Ikopi yale fomu iya kunikwa iZiko elingumba wesikhalazo sakho. Iinkcukacha ozinikezelayo kule fomu, ziqhotyoshelwe kule fomu, okanye unikezele ngazo kamva, luya kusetyenziswa kuphela ukuzama ukusombulula ingxabano yakho, ngaphandle kokuba kuchazwe ngenye indlela apha.*
5. *UmLawuli weeNkcukacha uya kusamkela kuphela isikhalazo sakho wakuba uqinisekisa ukuba uyithobele le mimiselo ingezantsi.*
6. *Nceda uqhoboshele iikopi zala maxwebhu alandelayo, ukuba unawo:*
  - *Ikopi yefomu ecela ukufikelela kwiirekhodi kwiZiko;*
  - *Impendulo yeZiko kwisikhalazo sakho okanye kwisicelo sofikelelo;*
  - *Nayiphi na enye imbalelwano phakathi kwakho neZiko malunga nesicelo sakho;*
  - *Ikopi yefomu yesibheni, ukuba isikhalazo saakho sinxulumene nequmrhu loluntu;*
  - *Impendulo yeZiko kwisibheni sakho;*
  - *Nayiphi na enye imbalelwano phakathi kwakho neZiko malunga nesibheni sakho;*
  - *Amaxwebhu agunyazisa wena ukuba wenze oku egameni lomnye umntu (ukuba kufanelekile);*
  - *Umyalelo wenkundla okanye amaxwebhu enkundla anxulumene nesikhalazo sakho, ukuba akhona.*
7. *Ukuba isithuba esibonelelweyo kule Fomu asonelanga, ngenisa iinkcukacha njengeSihlommelol kule Fomu uze usayine iphepha ngalinye.*

IYA  
KU: UmLawuli weeNkcukacha, PO Box 31533, Braamfontein, 2017

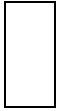
Idilesi ye-  
imeyile: [inforeg@justice.gov.za](mailto:inforeg@justice.gov.za)  
Inombolo  
yomnxeba: +27 (0) 10 023 5200

#### UBUME BOMNTU/IQELA ELIFAKA ISIKHALAZO

(Phawula ngo "X")

Ummangali buqu

Ummeli wommangali



Ongenandima  
inkulu kodwa  
ekho  
kumcimbi

<b>IIMFUNeko</b>				
Ingaba usifakile isicelo (ifomu ye-PAIA) sokufikelela kwirekhodi yequmrhu loluntu/labucala?	Ewe		Hayi	
Ingaba ziphelile iintsuku ezingama-30 ukusuka kumhla ongenise ngawo i-fomu yakho ye-PAIA?	Ewe		Hayi	
Ingaba uye wayisebenzisa yonke inkqubo yangaphakathi yokubhena kwisigqibo sikaSekela Gosa leeNkcukacha wequmrhu loluntu?	Ewe		Hayi	
Ingaba usifakile isicelo eNkundleni ukuze ufumane isiqabu esifanelekileyo malunga nalo mba?	Ewe		Hayi	

<b>YEYOKUSETYENZISWA NGUMLAWULI WEENKCUKACHA KUPHELA</b>				
Yamkelwe ngu: (Amagama apheleleyo)				
Isikhundla:				
Umsayino:				
Isikhalazo samkelwe:	Ewe		Hayi	
Inombolo yereferensi:				

*Isitampu somhla*

idilesi yeposi	Ifeksi	Olunye unxibelelwano lwe ( <i>Nceda ucacise</i> )

<b>ICANDELO A IINKCUKACHA ZOMNTU OFAKE ISIKHALAZO</b>				
Amagama apheleleyo:				
Inombolo yesazisi:				
Idilesi yeposi:				
Idilesi yesitalato:				
Idilesi ye-imeyile:				
Inombolo zoqhagamshelwano:	Umxeba. (B):		Ifeksi	
	ISelula			
<b>ICANDELO B IINKCUKACHA ZOMNTU ONGUMMELI</b>				
<i>Gcwalisa kuphela ukuba uya kumelwa. Amandla eGqwetha kufuneka ancanyathiselwe ukuba ummangali umelwe, ukuba asiphumelelanga isikhalazo eso siya kukhatywa)</i>				
Amagama apheleleyo abameli:				

Ubume bomelo:			
Inombolo yesazisi/inombolo yobhaliso:			
Idilesi yeposi:			
Idilesi yesitalato:			
Idilesi ye-imeyile:			
Inombolo zoqhagamshelwano:	Umnxeba. (B):		Ifeksi
	ISelula		
<b>ICANDELO C</b> <b>INGCACISO NGOMNTU OKHOYO KUMCIMBI KODWA ENGENANDIMA INKULU</b> ( Nceda uqhoboshele ileta yesigunyaziso)			
Uhlobo lequmrhu:	Labucala		Loluntu
Igama lequmrhu loluntu/labucala:			
Inombolo yobhaliso ( ukuba ikhona):			
Igama, ifani kunye netayitile yomntu ogunyazisiweyo ukuba afake isikhalazo:			
Idilesi yeposi:			
Idilesi yesitalato:			
Idilesi ye-imeyile:			
Inombolo zoqhagamshelwano:	Umnxeba. (B):		Ifeksi
	ISelula		
<b>ICANDELO D</b> <b>IQUMRHU EKUFAKWE ISIKHALAZO NGAKULO</b>			
Uhlobo lequmrhu:	Labucala		Loluntu
Igama *lequmrhu loluntu/labucala:			
Inombolo yobhaliso ( ukuba ikhona):			
Igama, ifani kunye netayitile yomntu osebenza naye kwiziko labucala/karhulumente ukuzama ukusombulula isikhalazo sakho okanye isicelo sokufikelela kwiinkcukacha.			
Idilesi yeposi:			
Idilesi yesitalato:			
Idilesi ye-imeyile:			
Inombolo zoqhagamshelwano:	Umnxeba. (B):		Ifeksi
	ISelula		
Inombolo yereferensi enikiweyo(ukuba ikhona):			

<b>ICANDELO E ISIKHALAZO</b>				
<i>Sixelele ngamanyathelo othe wawathatha ukuzama ukusombulula isikhalazo sakho (Izikhhalazo kufuneka ziqale zingeniswe ngqo kwiqumrhu loluntu ukuze kuphendulwe kwaye zisonjululwe; kukho imida emiselweyo)</i>				
Umhla esifakwe ngawo isicelo sofikelelo kwiirekhodi:				
Nceda uchaze uhlobo lwelungelo (amalungelo) ekufuneka lisetyenziswe okanye likhuselwe, ukuba othobeleyo uchasene nequmrhu labucala:				
Ingaba ukhe wazama ukusombulula lo mba nombutho?		Ewe		Hayi
Ukuba ewe, uyifumene nini? (Nceda uqhoboshele ileta kwesi sicelo.)				
Ingaba uye wabhena kwisigqibo sikaSekela Gosa leeNkcukacha lombutho woluntu?		Ewe		Hayi
Ukuba kunjalo, usifake nini isibheni?				
Ingaba usifakile isicelo eNkundleni ukuze ufumane isiqabu esifanelekileyo malunga nalo mba?		Ewe		Hayi
Ukuba ewe, nceda ubonise ukuba umcimbi wagwetywa nini yiNkundla? Nceda uqhoboshele uMyalelo weNkundla, ukuba ukhona.				
<b>ICANDELO F INGCACISO YOHLOBO LOKUFIKELELA KWIIREKHODI</b>				
<i>( Nceda ukhethe enye okanye ngaphezulu kwezi zilandelayo ukuchaza isikhalazo sakho kuMlawuli weeNkcukacha)</i>				
Isibheni esingaphumelelanga: ( iCandelo lama-77A(2)(a) okanye lama-77A(3)(a) lePAIA)	<i>Ndibhene ngokuchasene nesigqibo sebhodi yoluntu kwaye isibheni asiphumelelanga.</i>			
Ukungaphumeleli kwesicelo soxolelo: (Amacandelo ama-77A(2)(b) kunye nama-75(2) ePAIA)	<i>Ndifake isibheni sam ngokuchasene nesigqibo sebhodi yoluntu emva kwexesha ndafaka isicelo soxolelo. Isicelo soxolelo siye sachithwa.</i>			
Ukwaliwa kwesicelo sofikelelo: 77A (2) (c) ( i ) okanye 77A (2) (d) (i) okanye 77A (3) (b) we-PAIA)	<i>Ndicele ukufikelela kwiinkcukacha olugcinwe liqumrhu kwaye eso sicelo salawe okanye salawe ngokuyinxenye.</i>			
Umzimba ufuna ukuba ndihlawule umrhumo kwaye ndivakalelwa kukuba ugqithisile: (Icandelo lama-22 okanye lama-54 le-PAIA)	<i>Ithenda okanye intlawulo yomrhumo omiselweyo.</i>			
	<i>Ithenda okanye intlawulo yediphozithi.</i>			
Imbuyekezo yediphozithi: (iCandelo lama-22 (4) le-PAIA)	<i>ISekela leGosa leeNkcukacha lalile ukuhlawula idiphozithi ehlawulweyo malunga nesicelo sofikelelo esithe saliya.</i>			

Ukungavumelani nokwandiswa kwexesha: (iCandelo lama-26 okanye lama-57 ePAIA)	<i>Iqumrhu ligqibe kwelokuba landise umda wexesha lokuphendula isicelo sam, kwaye andivumelani nokongezwa komda wexesha eliceliweyo okanye ukongezwa kwexesha elithathiweyo ukuphendula kwisicelo sam sofikelelo.</i>	
Indlela yokufikelela eyaliweyo: (iCandelo lama-29 (3) okanye lama-60 (a) le-PAIA)	<i>Ndicele ufikelelo ngendlela ethile nefanelekileyo kwaye olo hlobo lofikelelo lwaliwa.</i>	
Kuthathwa njengokwaliwa: (iCandelo lama-27 okanye lama-58 le-PAIA)	<i>Sele ingaphezu kweentsuku ezingama-30 ndenze isicelo sam kwaye andikasifumani isigqibo.</i>	
	<i>Ixesha lokwandiswa liphelile kwaye akukho mpendulo ifunyenweyo.</i>	
Ubhengezo olungafanelekanga lwerekhodi: (Izizathu ezinyanzelekileyo zokwaliwa ukufikelela kwirekhodi)	<i>Iirekhodi (eziphantsi kwezizathu zokwalelwa ukufikelela) ziye zabhengezwa ngendlela engafanelekanga/engekho ngqiqweni.</i>	
Akukho zizathu zaneleyo zokwalelwa ukufikelela: (iCandelo lama-56 (3) (a) le-PAIA)	<i>Isicelo sam sofikelelo saliwe, kwaye akukho zizathu zibambekayo okanye ezaneleyo zokwala ezinikiweyo, kubandakanywa izibonelelo zalo Mthetho, ekuthe kwajongwa kuzo xa kwaliwe.</i>	
Ukufikelela ngokuyinxenye kwirekhodi: (iCandelo lama-28 (2) okanye lama-59 (2) le-PAIA)	<i>Ukufikelela kwinxalenye yeerekhodi eziceliweyo kuye kwavunywa kwaye ndiyakholelwa ekubeni ngaphezulu kweerekhodi bekufanele ukuba zixeliwe.</i>	
Ukurhoxiswa komrhumo: (iCandelo lama-22 (8) okanye lama-54 (8) le-PAIA)	<i>Ndikhululwe ekuhlawuleni nayiphi na imali kwaye isicelo sam sokurhoxisa iifizi saliwe.</i>	
Iirekhodi ezingafumanekiyo okanye ezingekhoyo: (iCandelo lama-23 okanye lama-55 le-PAIA)	<i>Iqumrhu libonise ukuba ezinye okanye zonke iirekhodi eziceliweyo azikho kwaye ndiyakholelwa ukuba zininzi iirekhodi zikhona.</i>	
Ukungaphumeleli ukuxela iirekhodi:	<i>Iqumrhu ligqibe kwelokuba lindinike ufikelelo kwiirekhodi eziceliweyo, kodwa andikazifumani.</i>	
Akukho gunya (ukusetyenziswa okanye ukukhuselwa kwawo nawaphi na amalungelo): (iCandelo lama-50 (1) (a) le-PAIA)	<i>Iqumrhu libonise ukuba iirekhodi eziceliweyo azibandakanywanga kwi-PAIA, kwaye andivumi.</i>	
Isicelo esingenantsingiselo okanye esicaphukisayo: (iCandelo lama-45 le-PAIA)	<i>Umzimba ubonise ukuba isicelo sam sibonakala sibubudenge okanye siyacaphukisa kwaye andivumi.</i>	
Okunye: (Ndicela undicacisele):		

**ICANDELO G  
ISIPHUMO ESILINDELEKILEYO**

Ucinga ukuba umLawuli weeNkcukacha angakunceda njani? Chaza isiphumo okanye isiphumo osifunayo.

<b>ICANDELO H IZIVUMELWANO</b>

***Isiseko esisemthethweni sezi zivumelwano zilandelayo sichaziwe kwiSaziso saBucala malunga nendlela yokufaka uxwebhu lwakho lwesikhalazo. Ukuze umLawuli weeNkcukacha aqhube isikhalazo sakho, kufuneka ujonge ibhokisi nganye kwezi zingezantsi ukubonisa isivumelwano sakho:***

- Ndiyavuma ukuba umLawuli weeNkcukacha angasebenzisa iinkcukacha ezinikiweyo kwi sikhalazo sam ukusincedisa ekuphandeni imiba enxulumene nokukhuthazwa kwelungelo lokufikelela kwiinkcukacha kunye nokukhuselwa kwelungelo lokuba neemfihlo eMzantsi Afrika. Ndiyaqonda ukuba umLawuli weeNkcukacha akasoze azibandakanye iinkcukacha zam ezimalunga nam okanye ezinye ukuchonga kuyo nayiphi na ingxelo yoluntu, kwaye iinkcukacha zam lobuqu zisakhuselwe ngumThetho woKhuseleko lweeNkcukacha Ngomntu, wama-2013 (umThetho onguNombolo 4 wama-2013). Ndiyaqonda ukuba ukuba andivumi, umLawuli weeNkcukacha usaza kusiqhubela phambili isikhalazo sam.
- Iinkcukacha ezikule Fomu yesikhalazo luyinyani ngokweenkcukacha zam nangenkolelo yam.
- Ndigunyazisa ukuba umLawuli weeNkcukacha aqokelele iinkcukacha zam zesikhalazo (ezifana neenkukacha ngam kule fomu yesikhalazo) kwaye ndiyisebenzise ukujongana nesikhalazo sam samalungelo oluntu esinxulumene nelungelo lokufikelela kwiinkcukacha kunye /okanye ukukhuselwa kwelungelo lokuba neemfihlo.

Ndiguqunyazisa nabani na (onjengomqeshi, umboneleli-nkonzo, ingqina) onolwazi olufunekayo ukuze aqhube isikhalazo sam ukuze abelane ngaso noMlawuli weeNkcukacha. umLawuli leeNkcukacha unokufumana ezi nkcukacha ngokuthetha namangqina okanye ngokucela iirekhodi ezibhaliweyo. Ngokuxhomekeke kuhlobo lwesikhalazo, ezi rekhodi zinokubandakanya iifayile zabasebenzi okanye idatha yomqeshi, iirekhodi zonyango okanye zesibhedlele, kunye neenkcukacha zezemali okanye zomrhafi.

Ukuba naziphi na iinkcukacha zam zoqhagamshelwano ziyatshintsha ngexesha lenkqubo yesikhalazo, luxanduva lwam ukwazisa umLawuli weeNkcukacha, kungenjalo isikhalazo sam sinokulibaziseka okanye sivalwe.

Isayinwe e \_\_\_\_\_ ngolu suku lwe \_\_\_\_\_ 20 \_\_\_\_\_

---

Ummangali/ummeli/umntu ogunyazisiweyo okhoyo kumcimbi  
kodwa engenandima inkulu